

# MONTHLY MEMBERSHIP PROGRESS REPORT

District 5M 3

Results as of: 5/31/2020

GMT:

LOCATION MINNESOTA

GMT CA

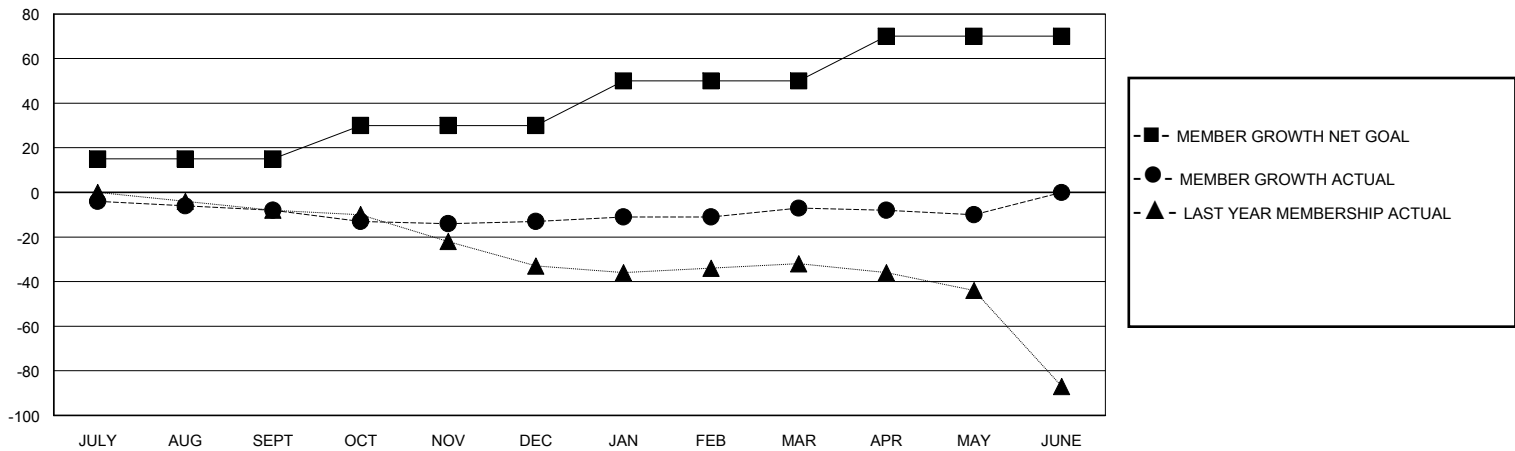
Clubs			
RESULTS FOR 2019-2020			
QUARTER	NEW CLUB GOAL	NEW CLUBS	DROPPED CLUBS
JULY/AUG/SEPT	0	0	1
OCT/NOV/DEC	0	0	0
JAN/FEB/MAR	0	0	0
APR/MAY/JUNE	0	0	0

Members			
RESULTS FOR 2019-2020			
QUARTER	MEMBER GROWTH NET GOAL	MEMBER GROWTH ACTUAL	DROPPED MEMBERS ACTUAL (including transfers)
JULY/AUG/SEPT	15	15	18
OCT/NOV/DEC	15	17	22
JAN/FEB/MAR	20	19	12
APR/MAY/JUNE	20	7	10

GOALS AND ACTUAL NEW CLUBS CUMULATIVE



GOALS AND ACTUAL MEMBERS CUMULATIVE



DROPPED CLUBS: 1	26 CLUBS OF 39 ADDED 1 OR MORE NEW MEMBERS	<b>GENDER DISTRIBUTION</b>
		MALE 869 (76.90%)
		FEMALE 261 (23.10%)
<b>DROPPED MEMBERS</b>	<a href="#">CLICK HERE FOR CUMULATIVE MEMBERSHIP DATA</a>	TOTAL FAMILY UNIT MEMBERS 186
DECEASED 18		FAMILY MEMBERS PAYING HALF DUES 93
CLUB CANCELLED 0		
OTHER 44		
<b>TOTAL 62</b>		